

RS422 PERSONALITY MODULE

Installing an RS422 Personality Module (RPM)

! CAUTION !

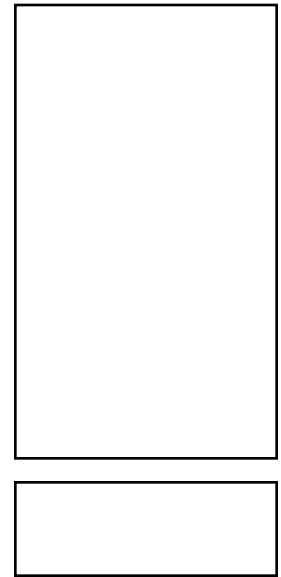
The RPM is a static sensitive device and should be treated as such. MTS recommends a static wrist wrap be worn during installation and that these procedures are conducted in a clean environment.

1. Place the transducer hex in a vise.
2. Unscrew the cover using hand pressure only. Note that cover has right hand threads. A specially designed cover wrench is available from MTS.

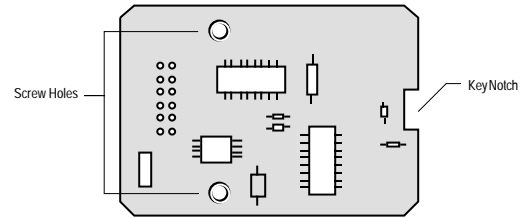
! CAUTION !

Hands must be clean. Ensure that no foreign material contacts the inside components.

3. Once the cover is removed, clean the inner threads of the cover and bracket with a lint free cloth. Spray ONLY the cover threads with Sherwin Williams #00217 Teflon® spray.
4. Remove the RPM from the static sensitive bag by holding the module by its edges.
5. Place provided insulator on the bracket.
6. Align the 12 pin connector on the interconnect board with the socket on the RPM, ensure pins are straight, and press gently until PM is securely inserted.
7. Once the module is inserted, secure with the 2 provided Plastite screws until snug. Do not over-tighten!
8. Carefully align the cover to the threads and hand tighten until snug against the gasket.
9. Once cover is secure, attach the label provided as shown in Figure 2.



To assure full coverage under warranty and error-free future replication orders, install this label as instructed in Step 9.



RPM Module
Figure 1

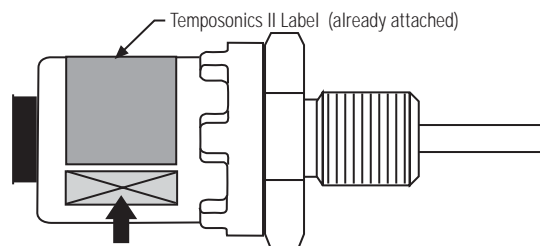


Figure 2

